

G7 CLIENT

INTELLIGENT MONITORING. SMARTER DECISIONS.

G7 Client is a powerful and user-friendly software platform for real-time monitoring, data visualization, alarm management and analysis of your critical operations. Designed for reliability, flexibility and performance at every scale.



MULTI-PLATFORM SUPPORT

Access anytime, anywhere.



Windows



iOS



Android

- ✓ Consistent experience across all platforms
- ✓ Seamless synchronization

POWERFUL FEATURES. COMPLETE CONTROL.



REAL-TIME MONITORING

- ✓ Live data with instant updates
- ✓ Multi-channel simultaneous view
- ✓ Custom dashboards for every user



HISTORICAL DATA & ANALYTICS

- ✓ Powerful trend analysis
- ✓ Compare data by day, month, year
- ✓ Zoom, pan and detailed inspection



ALARM MANAGEMENT

- ✓ Real-time alarm pop-ups
- ✓ Alarm history and acknowledgement
- ✓ Email & SMS notifications



MULTI-SITE MANAGEMENT

- ✓ Monitor multiple locations
- ✓ Centralized data from all sites
- ✓ Map-based visualization



MULTI-USER SUPPORT

- ✓ Role-based access control
- ✓ User, group, station and sensor management
- ✓ Personalized dashboards



REPORTS & DATA EXPORT

- ✓ Export data in multiple formats
- ✓ Automated report generation
- ✓ Easy sharing and record keeping

KEY ADVANTAGES



HIGH EFFICIENCY

Monitor thousands of data points in real time with zero lag.



FLEXIBLE & SCALABLE

From small installations to enterprise systems—G7 Client grows with you.



FASTER DECISIONS

Real-time alarms and insights help you act quickly and prevent downtime.



SECURE & RELIABLE

Robust architecture with user-level security and data integrity you can trust.



ACCESS ANYWHERE

Access your critical data from control rooms or remote locations securely.



MULTIPLE VIEW MODES

Dashboard, charts, tables, HMI and map views for every operational need.

MULTIPLE VIEWS. TOTAL CLARITY.



Meter



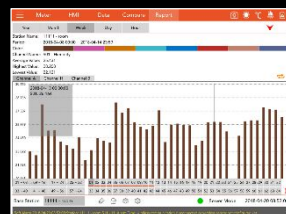
Dashboard



HMI



Line Chart



Report






G7 Client App

Multi-user multi-platform remote client app

Powerful Client Interface for Industrial IoT Monitoring

Premier Client delivers real-time and historical data visualization with advanced alarm management and multi-device monitoring. Designed for industrial environments, it enables efficient decision-making through intuitive graphics, dashboards, and geospatial mapping.






KEY FEATURES

-  Real-time & historical data visualization
-  Centralized server database access
-  Alarm alerts (on-screen & email)
-  Multiple base stations simultaneous monitoring
-  Time-based analysis (day / month / year)
-  Data export for reporting (csv, SQLite, pdf)

DATA VISUALIZATION

- ❖ Live data monitoring with dynamic updates
- ❖ Historical trend analysis
- ❖ Multi-channel comparison
- ❖ Structured data inspection
- ❖ Real-time alarm pop-up on screen
- ❖ Independent alarm settings per user

DISPLAY MODES

-  **Meter** – Real time multi-channels view
-  **HMI Interface** – Industrial control view
-  **Line Chart** – Multi-channel comparison
-  **Dashboard** – Up to 64 sensors data
-  **Report** – Statistic data report

MULTI-USERS & GROUPING

- User-based access control
- Grouping of:
 - users
 - base stations
 - sensors
- Programmable user profile
- Administrator & User Authentication

BENEFITS

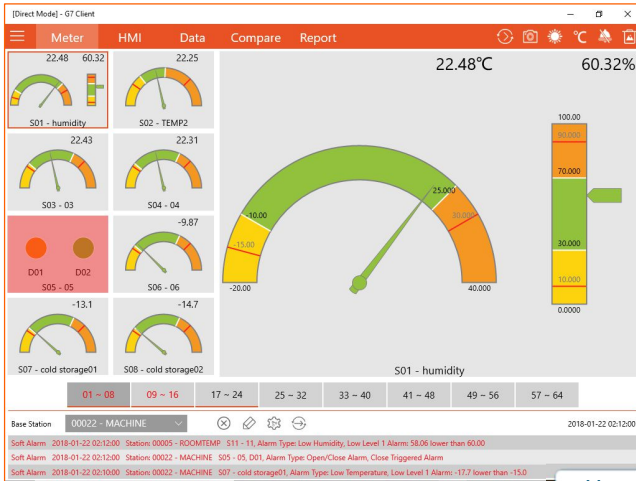
- Centralized system management
- Enhanced operational visibility
- Data-driven decision making
- Fast response with real-time alerts

G7 Client App

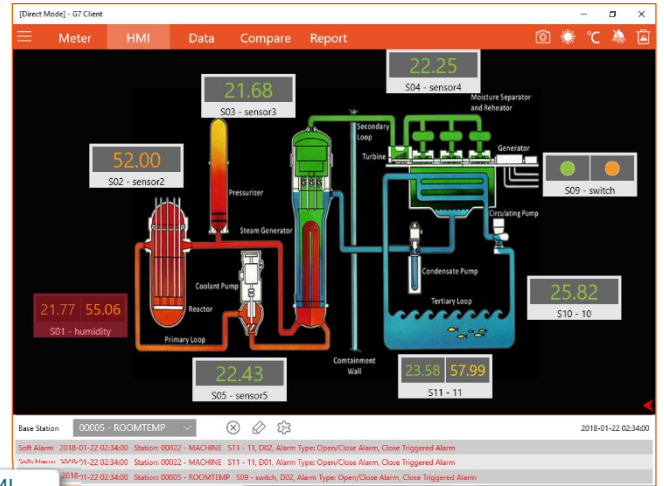
Multi-user multi-platform remote client app

Client Software Capabilities

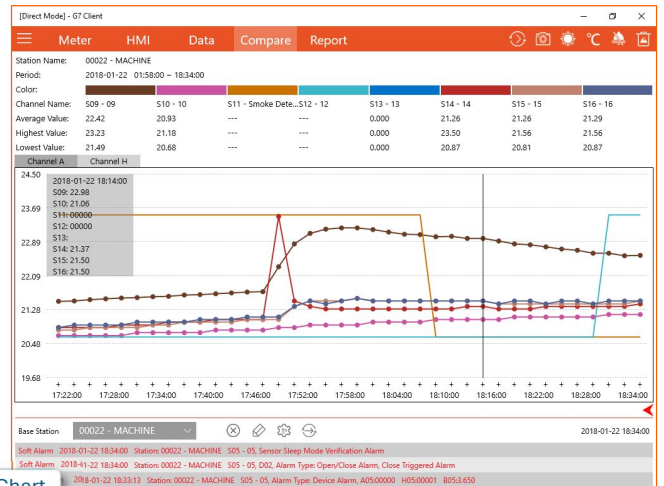
- Windows 11, iOS, and Android support
- Multi-screen visualization
- Real-time alerts and notifications
- Remote alarm levels configuration



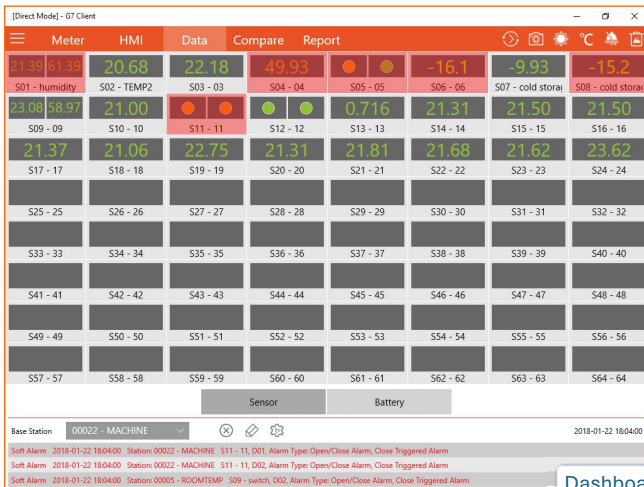
Meter



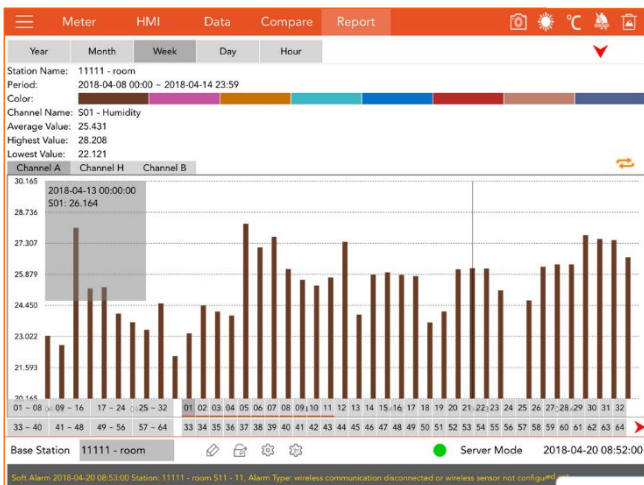
HMI



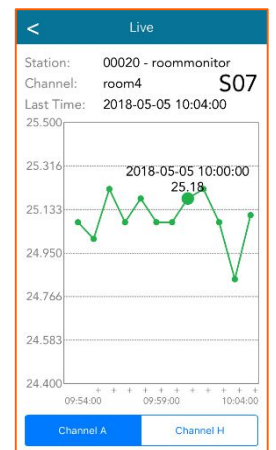
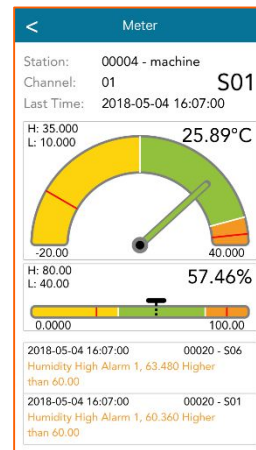
Line Chart



Dashboard



Report



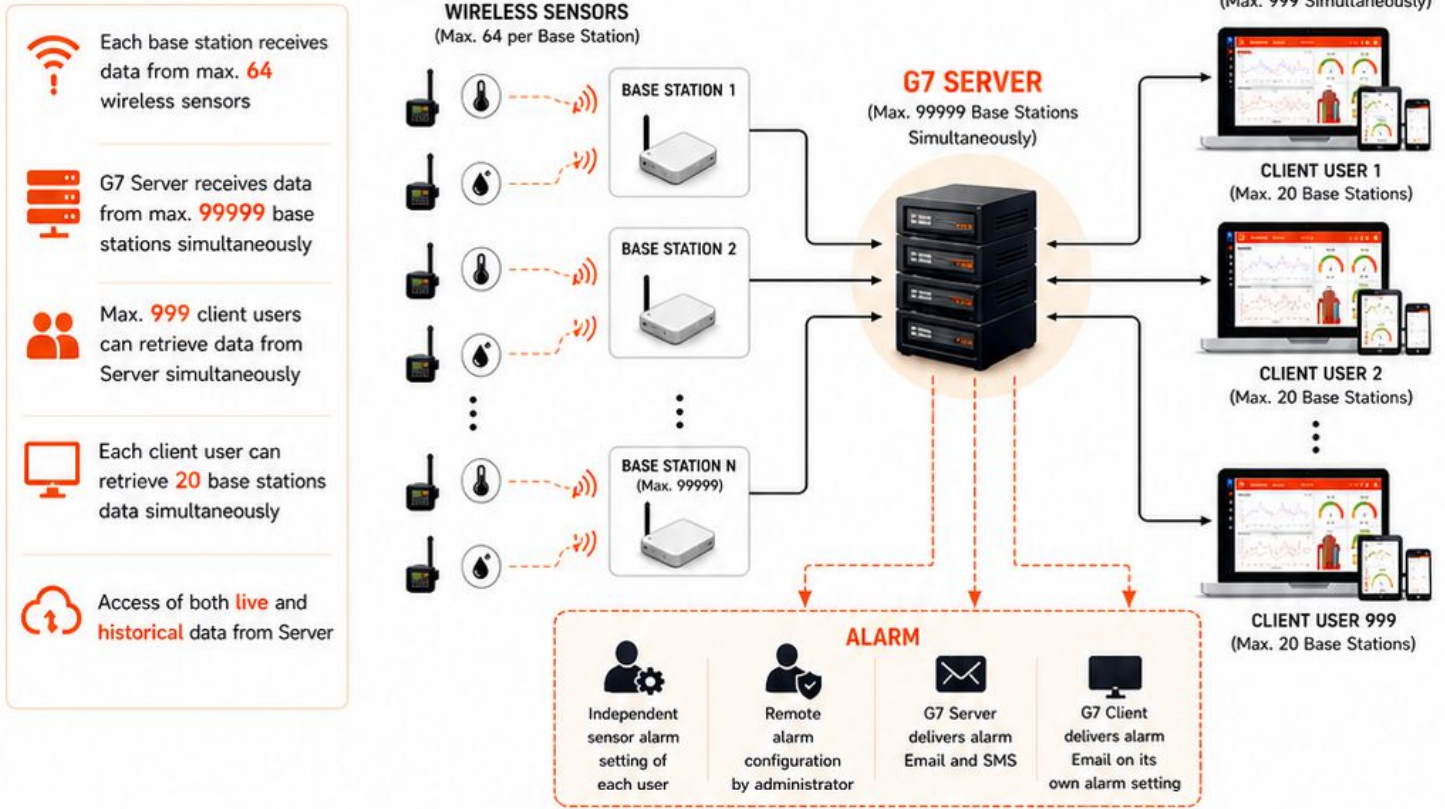
G7 Client for Android Phone, iPhone, iPad

G7 Client App

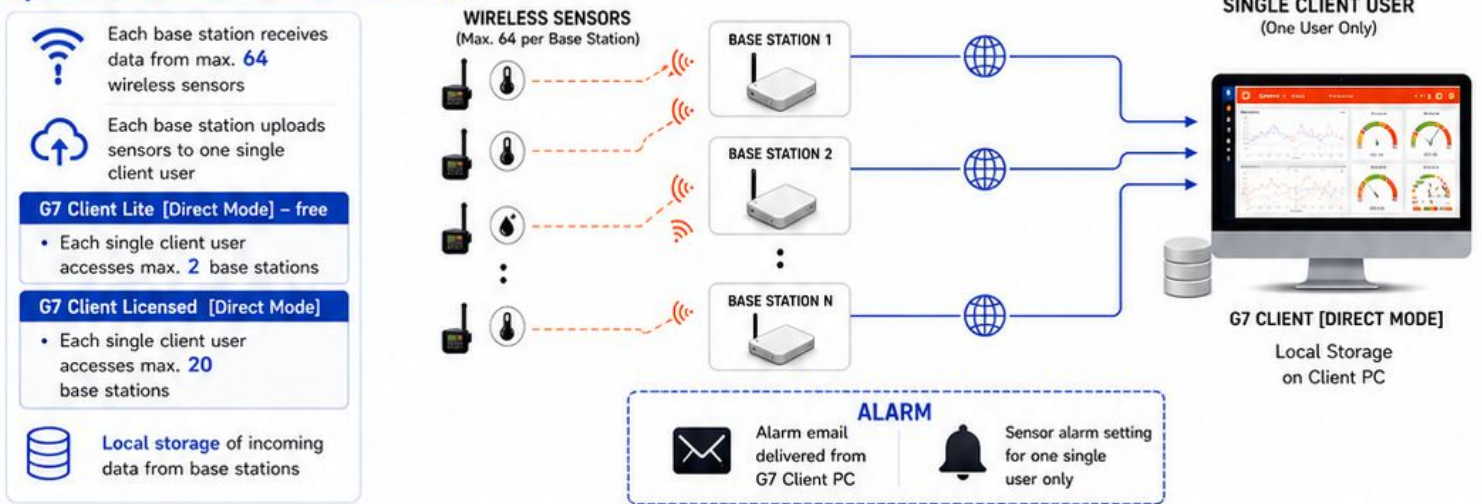
Multi-user multi-platform remote client app

G7 CLIENT – SYSTEM ARCHITECTURE

G7 Client [Server Mode] – free bundled with G7 Server package



G7 Client [Direct Mode] – free download



SERVER MODE vs DIRECT MODE – AT A GLANCE

SERVER MODE (G7 Client + G7 Server)	FEATURE	DIRECT MODE (G7 Client)
Centralized system	System Type	Standalone system
Max. 99999 base stations to one server	Scalability	One base station per client connection
Max. 999 client users simultaneously	Concurrent Users	One user only
Each user retrieves max. 20 base stations	Data Access	Lite: max. 2 base stations Licensed: max. 20 base stations
Live & historical data from server	Data Access	Local storage on client PC
Server sends Email & SMS alarms	Alarm Delivery	Email alarms from G7 Client PC