

Premier Client App

Multi-user multi-platform remote client app



SMART MONITORING, SECURE DATA, ANYTIME, ANYWHERE

End-to-end IoT Monitoring Solution for Real-time Data Acquisition, Visualization, Alerts & Reports

DATA ACQUISITION LAYER



EASEMIND
MULTI-CHANNEL DATA LOGGER
4G LTE / Ethernet / WiFi

SENSORS & EQUIPMENT

- Temperature
- Level
- Pressure
- Flow
- Humidity
- Other Parameters

KEY BENEFITS

- Real-time Monitoring & Control
- Instant Alerts via Email & SMS
- Scalable & Reliable Cloud Infrastructure
- Multi-user Access Anywhere, Anytime
- Secure Data & Communication
- Easy Integration & Expansion



4G / LTE
Ethernet
WiFi
Real-time
Data Upload

PREMIER SERVER CLOUD PLATFORM



DATABASE
Secure & Scalable
Data Storage



DATA PROCESSING ENGINE
Real-time Processing,
Validation & Analytics



ALARM & NOTIFICATION ENGINE
Smart Alerts &
Event Management



USER MANAGEMENT
Roles, Permissions &
Secure Access



API / INTEGRATION MODULE
Seamless Integration with
Third-party Systems

Secure Access
(HTTPS / SSL)



Visualization
Monitoring
Control



EMAIL
ALERTS



SMS
ALERTS

PREMIER CLIENT SOFTWARE

ACCESS ON MULTIPLE DEVICES



DESKTOP / WINDOWS CLIENT



TABLET



MOBILE

- REAL-TIME DASHBOARD**
Live Data Monitoring
- HISTORICAL TRENDS**
Charts & Analysis
- REPORTS**
Custom & Scheduled Reports
- ALARM MONITORING**
Real-time Alerts & History
- DEVICE MANAGEMENT**
Configure & Manage Devices





Premier Client App

Multi-user multi-platform remote client app

Powerful Client Interface for Industrial IoT Monitoring

Premier Client delivers real-time and historical data visualization with advanced alarm management and multi-device monitoring. Designed for industrial environments, it enables efficient decision-making through intuitive graphics, dashboards, and geospatial mapping.

KEY FEATURES

-  Real-time & historical data visualization
-  Centralized server database access
-  Alarm alerts (on-screen & email)
-  Multi-datalogger simultaneous monitoring
-  Time-based analysis (day / month / year)
-  Data export for reporting







DATA VISUALIZATION

- ❖ Live data monitoring with dynamic updates
- ❖ Historical trend analysis
- ❖ Multi-channel comparison
- ❖ Structured data inspection

MAPPING INTEGRATION

- Google Maps
- Apple Maps
- Windows Maps
- Supports location-based asset tracking

DISPLAY MODES

-  Split Screen – Chart + meter combined
-  HMI Interface – Industrial control view
-  Line Chart – Multi-channel comparison
-  Data Listing – Tabular analysis
-  Dashboard – System overview
-  Map View – Geographical monitoring

BENEFITS

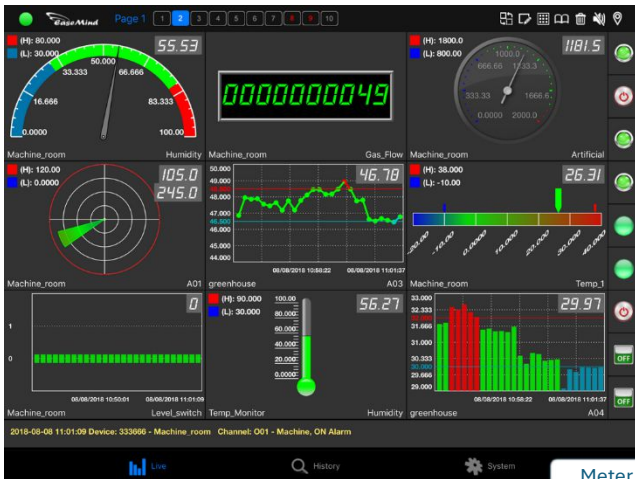
- Centralized system management
- Enhanced operational visibility
- Data-driven decision making
- Fast response with real-time alerts

Premier Client App

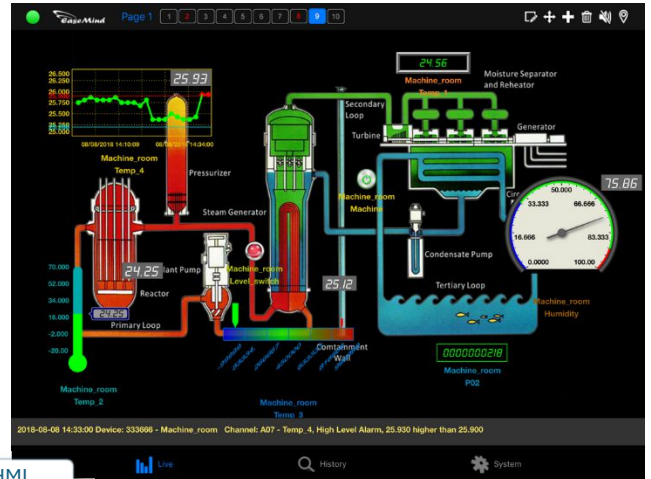
Multi-user multi-platform remote client app

Client Software Capabilities

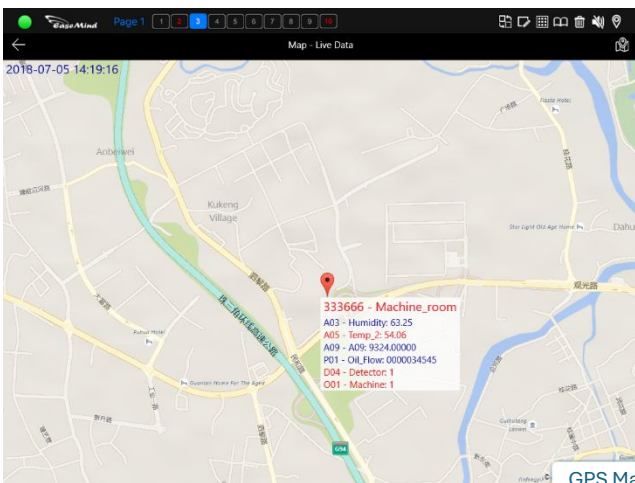
- Windows 11, iOS, and Android support
- Multi-screen visualization
- Real-time alerts and notifications
- GPS mapping and device tracking



Meter



HMI



GPS Map



Line Chart



Dashboard

Num.	Type	ID	Name	Date	Time	A03	A04	A25	A26
1	STA	555222	Temp_Monitor	09/08/2018	09:58:00	55.78	28.06	2243.92667	.N
2	STA	555222	Temp_Monitor	09/08/2018	09:58:01	55.87	28.06	2243.92530	.N
3	STA	555222	Temp_Monitor	09/08/2018	09:57:00	55.87	28.00	2243.92509	.N
4	STA	555222	Temp_Monitor	09/08/2018	09:56:01	55.66	28.06	2243.93034	.N
5	STA	555222	Temp_Monitor	09/08/2018	09:55:00	55.96	28.06	2243.92750	.N
6	STA	555222	Temp_Monitor	09/08/2018	09:54:00	55.90	28.06	2243.92465	.N
7	STA	555222	Temp_Monitor	09/08/2018	09:53:00	55.69	28.06	2243.91875	.N
8	STA	555222	Temp_Monitor	09/08/2018	09:52:00	56.08	28.06	2243.92202	.N
9	STA	555222	Temp_Monitor	09/08/2018	09:51:00	56.05	28.06	2243.92433	.N
10	STA	555222	Temp_Monitor	09/08/2018	09:50:00	56.11	28.18	2243.92481	.N
11	STA	555222	Temp_Monitor	09/08/2018	09:49:00	55.84	28.18	2243.92972	.N
12	STA	555222	Temp_Monitor	09/08/2018	09:48:00	55.63	28.12	2243.92773	.N
13	STA	555222	Temp_Monitor	09/08/2018	09:47:00	55.41	28.12	2243.92687	.N
14	STA	555222	Temp_Monitor	09/08/2018	09:46:00	55.14	28.18	2243.92448	.N
15	STA	555222	Temp_Monitor	09/08/2018	09:45:00	55.05	28.18	2243.92981	.N
16	STA	555222	Temp_Monitor	09/08/2018	09:44:00	55.05	28.18	2243.92577	.N
17	STA	555222	Temp_Monitor	09/08/2018	09:43:00	54.92	28.25	2243.92239	.N
18	STA	555222	Temp_Monitor	09/08/2018	09:42:00	54.95	28.18	2243.92651	.N
19	STA	555222	Temp_Monitor	09/08/2018	09:41:00	55.20	28.06	2243.92732	.N
20	STA	555222	Temp_Monitor	09/08/2018	09:40:00	55.69	28.06	2243.92519	.N

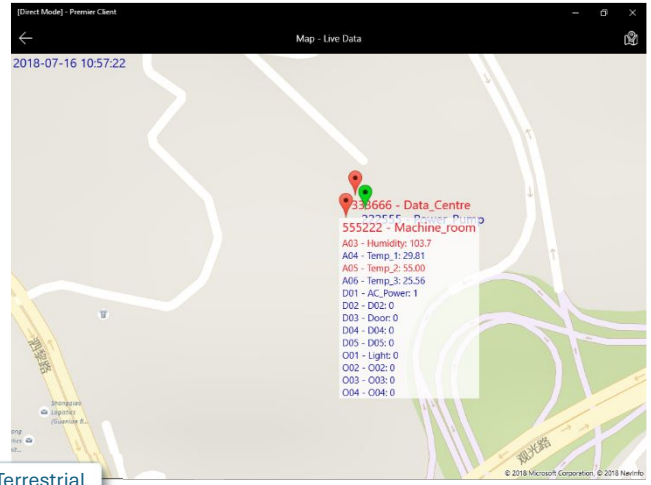
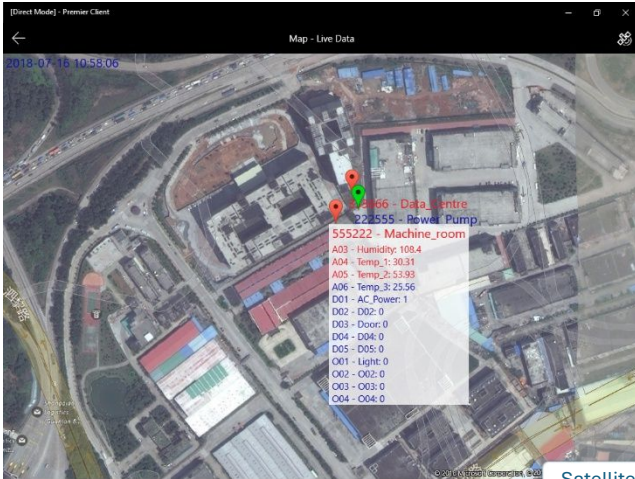
Data List

Premier Client App

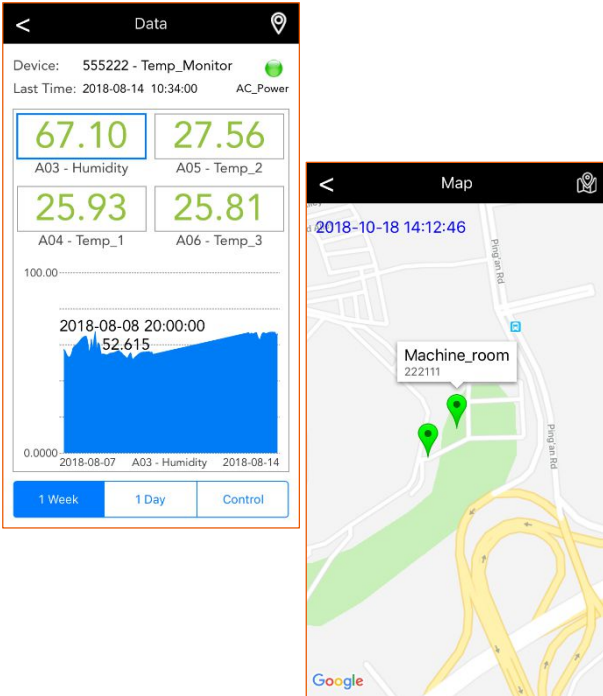
Multi-user multi-platform remote client app

GPS Tracking

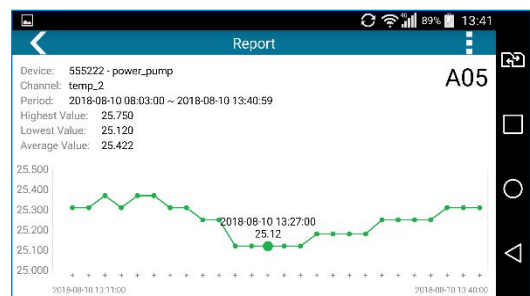
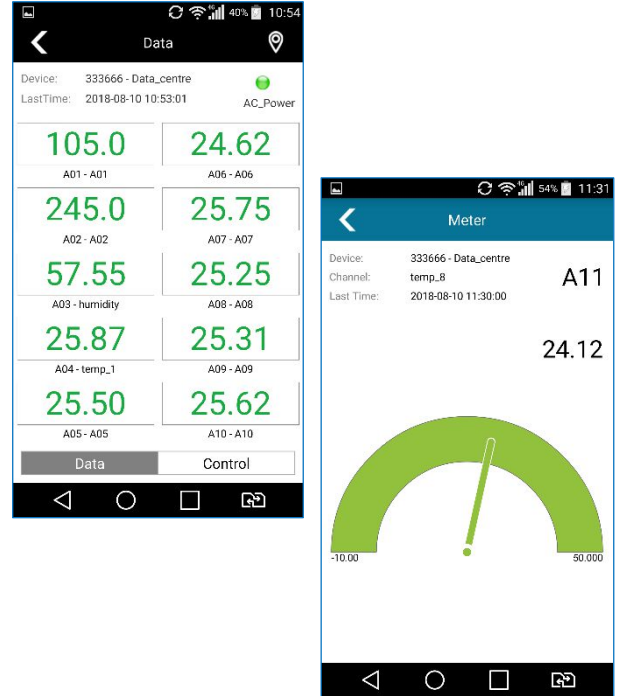
- Max. 50 data loggers in one single map
- Display all channels of each device
- Data & Alarm Alert simultaneous display
- Satellite or Terrestrial view user selectable



Premier Client for iPhone



Premier Client for Android Phone



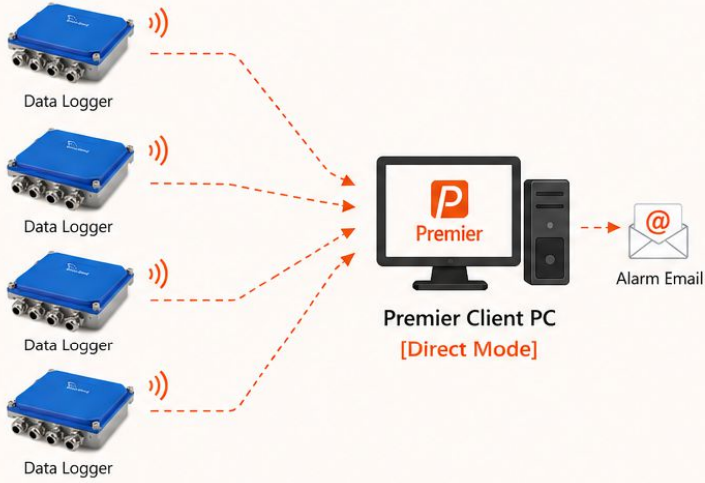
Premier Client App

Multi-user multi-platform remote client app

Premier Client [Direct Mode]

<Direct Mode>

[few data loggers to one user] system



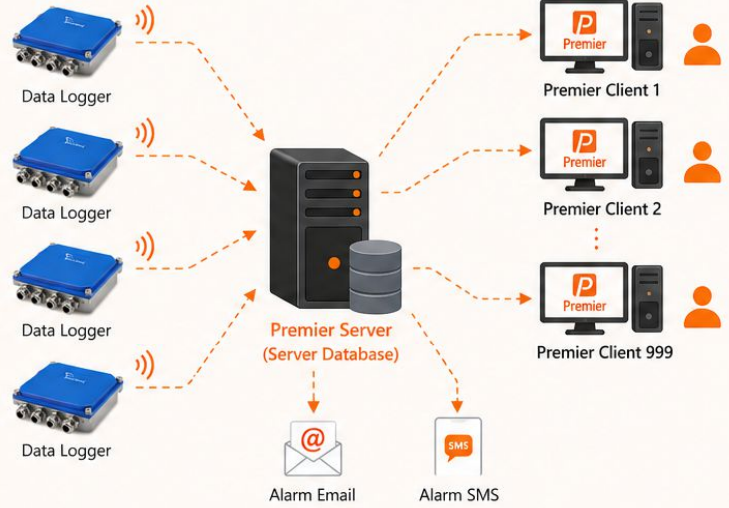
Data loggers deliver data to Client PC:
Only 1 Premier Client receives data

- Premier Client [Direct Mode]
 - Free Version - receives data from max. 2 data loggers
 - Full License Version - receives data from max. 20 data loggers
- Alarm email delivered from Premier Client PC

Premier Client [Server Mode]

<Server Mode>

[many data loggers to many users] system



Data loggers deliver data to one single server.

Max. 999 Premier Client users can access data from the Server Database simultaneously

- Premier Client [Server Mode]
 - Receives data from max. 999999 of data loggers
 - Access of both live and historical data from Server Database
 - Alarm email and SMS can be delivered from Premier Server to many users
 - Grouping allows assignment of data loggers to different client users
- Free bundled with Premier Server Software

KEY FEATURES

MULTI-MODE VISUALIZATION

HMI, Split Screen, Data Listing, Line Chart, Dashboard, and Map views per user profile.

REAL-TIME DATA REFRESH

Automatic data updates at defined intervals across all profiles for real-time monitoring.

USER PROFILE MANAGEMENT

Instant switching between profiles for quick access to multiple data views.

FLEXIBLE SYSTEM ARCHITECTURE

Supports Direct Mode and Server Mode. Scalable from single user to enterprise systems.

ADVANCED ALARM MANAGEMENT

Real-time alarm display at both profile and individual channel levels.

INDEPENDENT USER CONFIGURATION

Individual alarm settings and thresholds for each client user and application.

MULTI-CHANNEL SUPPORT

Supports Analog Inputs, Digital Alarms, and Pulse Channels.

CUSTOMIZABLE VISUALIZATION

User-programmable chart styles, high/low alarm colors, ranges, and scaling.

	Premier Client [Lite] - Free			Premier Client [Server & Direct Mode]		
	Win 11	iPad	Phone	Win 11	iPad	Phone
Max. number support						
User Profiles	4	4	4	30	30	30
Data Listing Channels	No limit	2	26	No limit	No limit	No limit
Split Screen Profiles / Channels each profile	1/9	1/4	1/4	30/9	30/9	1/4
Line Chart Channels	2	2	2	8	8	8
HMI Profiles / Channels each profile	1/4	1/4	1/4	30/30	30/30	30/30